



# BEA WEBLOGIC

Get a New View of your Code

## WORKSHOP™ 8.1

Have you dreamed of having all your developers working together on a single platform to create and deploy industrial-strength applications? Now you can. With BEA WebLogic Workshop, all developers—not just J2EE experts—can cooperatively build, test, integrate, and deploy service-oriented, enterprise-class applications.

### EXECUTIVE OVERVIEW

BEA WebLogic Workshop 8.1 is a unified, simplified, and extensible development environment that enables all developers to build standards-based, enterprise-class applications on the BEA WebLogic Enterprise Platform™ 8.1—thus empowering development organizations to deliver unprecedented IT productivity and accelerate time-to-value.

### MAKING J2EE DEVELOPMENT ACCESSIBLE AND PRODUCTIVE

BEA WebLogic Workshop insulates developers from the inherent complexity of J2EE and lets developers focus on business logic instead of tedious infrastructure code. This innovation means the enterprise-proven strength of J2EE is finally accessible to the majority of application developers new to Java and J2EE, making the entire IT organization an order of magnitude more productive.

### BUILDING ENTERPRISE-CLASS APPLICATIONS

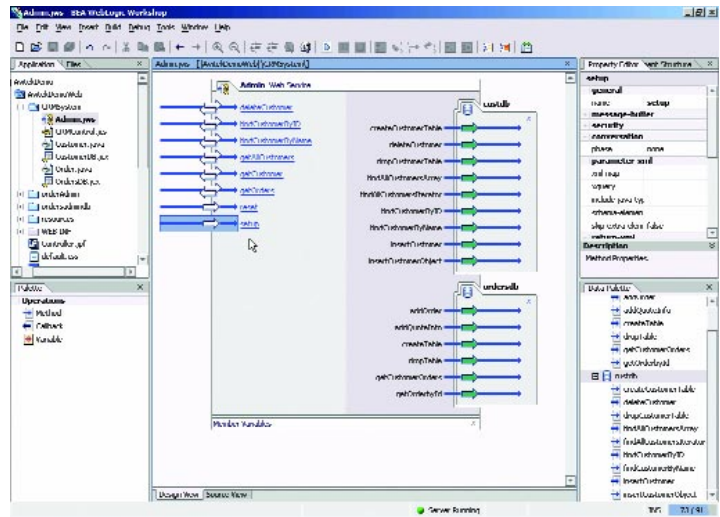
BEA WebLogic Workshop greatly reduces development risk by implementing applications on scalable, reliable, and secure enterprise-class architecture. Furthermore, all applications are created using standard J2EE components to protect your technology investments and maintain maximum flexibility.

### REDUCING IT COMPLEXITY

BEA WebLogic Workshop provides Java Controls that make it incredibly easy to connect with IT resources. Moreover, Java Controls are extensible and uniformly available in building any BEA WebLogic Enterprise Platform application. This powerful and efficient approach reduces IT complexity, optimizes information availability, promotes development of reusable services that incorporate business “best practices,” and ultimately, empowers developers to accomplish more in less time at less cost.

## BEA WEBLOGIC WORKSHOP 8.1

BEA WebLogic Workshop provides a simplified visual development environment for building, testing, and deploying all BEA WebLogic Enterprise Platform applications.



## BEA WEBLOGIC WORKSHOP 8.1 CAPABILITIES

BEA WebLogic Workshop delivers a shared programming model for building enterprise-class applications on the BEA WebLogic Enterprise Platform. With BEA WebLogic Workshop, any developer can build Web services, Web applications, portals, and integration projects with the same, productivity-maximizing approach, and deploy on the industrial-strength foundation of BEA WebLogic Server. To accomplish these goals, BEA WebLogic Workshop uses three innovative components: a visual development environment, a comprehensive runtime framework, and extensible Java Controls.

### VISUAL DEVELOPMENT ENVIRONMENT

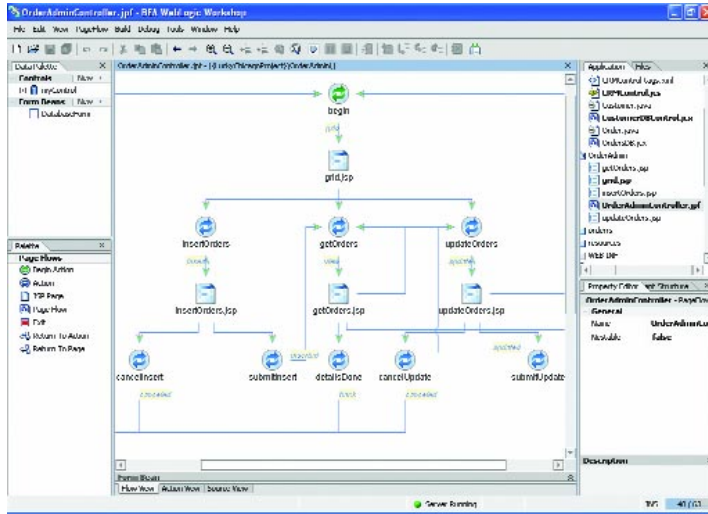
The BEA WebLogic Workshop 8.1 visual development environment is a shared tool for building, testing, debugging, and integrating all BEA WebLogic Enterprise Platform applications. This unified development architecture streamlines the application development process across the IT organization.

BEA WebLogic Workshop offers visual designers and intuitive concepts such as events, properties, and controls to enable event-based development. This simplified programming model eliminates the need for developers to master complex J2EE APIs and object-oriented programming disciplines, thereby enabling all developers—including J2EE experts as well as application developers with skills in other visual or procedural languages—to work together on the BEA WebLogic Enterprise Platform.

The visual development environment creates standard Java files with code annotations that declare the enterprise-class requirements implemented by the run-time framework. The Java source code is of course easily accessible to let developers take advantage of powerful code-editing features that complement the visual designers.

### RUNTIME FRAMEWORK

The BEA WebLogic Workshop runtime framework is the convergence layer that unifies the architecture and enables the single, simplified programming model



## BEA WEBLOGIC WORKSHOP 8.1

Visual editors deliver industry-leading ease-of-use for development of dynamic Web applications

extending across all BEA WebLogic Enterprise Platform application types. By interpreting the annotated code created at design-time, the run-time framework can implement the necessary J2EE components and abstract all the low-level plumbing details involved with J2EE application development.

Now for the first time, developers are able to focus on the application logic necessary for solving business needs—instead of infrastructure code, component configuration and deployment details—thus fueling dramatic productivity gains for the developer and the entire IT organization.

### JAVA CONTROLS

A key challenge in application development has been connecting to existing IT assets—such as databases, legacy applications, and packaged software applications—without needing to write tedious API-level code. BEA WebLogic Workshop eliminates that challenge by providing Java Controls that empower developers to

simply and quickly connect with data, systems, applications, and business logic in a reusable, component based fashion. This approach enables organizations to better manage IT assets and more efficiently capitalize on their investment in existing infrastructure.

Importantly, Java Controls are extensible so that developers may create business logic components as custom Java Controls that can be immediately used in any project, by any developer using BEA WebLogic Workshop. As a result, Java Controls provide an efficient way to encapsulate best practices and resource connectivity as reusable services that then become the central building blocks for all BEA WebLogic Enterprise Platform applications.

## BEA WEBLOGIC WORKSHOP FEATURES AND BENEFITS

FEATURE	BENEFIT
<b>Enterprise-Class Web Services</b>	
Asynchronous conversations	Automatic support for state management, message correlation, and conversation lifecycles to handle asynchronous interaction models
Visual XQuery mapping	Support loose-coupling with a visual tool enabling a standard and flexible technique to transform between XML and Java
Business-level documents	Employ higher-level, coarse-grained messages to enhance scalability and usability
Enhanced security model	Secure applications with transport-level security and message-based security (authentication, signature, and/or encryption)
Reliable messaging	Support for applications requiring guarantee of processing messages "once and only once" or "in order"
Interceptors	Extensibility and integration via SOAP interceptor model
XMLBeans	Gain a convenient Java object-based view of XML data without losing access to the richness of the native XML structure
Standards support	Support latest standards including SOAP 1.2, WSDL 1.2, and UDDI 2.0
<b>Enterprise-Class Web Applications</b>	
Web application framework	Visual designers, controls, and framework extensions to build server-side applications with dynamic JSP/HTML user interfaces
Enterprise-class architecture	Implement standards-based applications leveraging Model-View-Controller (MVC) architecture and Struts framework
Simplified visual development	Numerous designers to enable page and form creation featuring WYSIWYG, two-way editing with drag-and-drop functionality
Java Page Flows	Provide robust control over page connectivity, business logic execution, and data-binding; controller logic is distinct so that it can be centrally managed and allow for independent page development
Automated data-binding	Drag and drop wizards for automated data binding so Web applications can access and update important data sources such as databases, controls, and Web services
Data-binding tag libraries	Provides all applications with easy access to data elements including fields, lists, trees, grids, etc.
Extend annotated code model	Annotations provide easy access to advanced functionality including navigation, state, validation, and security
Simplified state management	Collect and manage intermediate data through an application's lifecycle for convenient storage or reuse
<b>Standards Support</b>	
J2EE Compliance	All applications implemented with 100% standard J2EE components (EJB, JMS, JDBC, etc.); Support for JDK 1.4
Web services	Support latest standards including SOAP 1.2, WSDL 1.2, UDDI 2.0, and WS-Security
Struts framework	Implement Web applications based on the Apache open-source Struts framework
XML features	XML productivity tools based on emerging XML Schema and XQuery standards
Standards leadership	Innovative use of annotated code is supported by several BEA partners and is in the process of being standardized via the Java Community Process via JSR 175 and JSR 181

## BEA WEBLOGIC WORKSHOP FEATURES AND BENEFITS

FEATURE	BENEFIT
<b>Unified Development Environment</b>	
Simplified programming model	Maximize ease-of-use with a visual development environment based on controls, events, and properties
Common development architecture	Use a single tool, runtime framework, and programming model to build and integrate all BEA WebLogic Platform 8.1 applications including Web services, Web applications, custom Java Controls, portals, and integration projects
Run-time application framework	Simplify J2EE application development by automatically creating standard J2EE components to implement enterprise-class application architectures
Java Controls	Provide a simplified and extensible approach for leveraging IT assets without requiring complex API-level programming; built-in Java Controls enable easy connectivity with data-bases, EJBs, Web services, email systems, and more
Annotated code	Code annotations included in source code to easily declare developers' specifications for run-time application behavior while preserving the standard Java file format
Two-way editing	Develop seamlessly in either a visual environment or code-level environment; the Source View and Design View are instantly synchronized and avoid the inconvenience of complex generated code or one-way wizards
Enhanced iterative development model	Switch from writing code to immediately testing applications with one-button deployment, integrated debugger, and automated test harness
Support for API-level J2EE development	Comprehensive support for Enterprise Java Bean (EJB) development and deployment, including design views for session and entity beans
Advanced IDE features	Enhance development experience with productivity-boosting, fully-configurable IDE featuring: fast multi-language debugging, source editing features (auto-completion, auto-import, navigation, multi-language files), syntax highlighting, enhanced windowing environment, common project model, source code control integration, context sensitive help system, shared tools and palettes, and much more
<b>Custom Java Controls</b>	
Extensible access to resources	Build custom-defined components that seamlessly plug into the Workshop framework and enable simplified connectivity to any IT asset, ISV application, or piece of business logic
Unified architecture	Java Controls are available uniformly to all BEA WebLogic Platform™ 8.1 applications
Support visual editing	Easily create methods and interfaces in the Design View with associated property sheets to make declarative attributions
Powerful run-time features	Built-in support for asynchronous communication, lifecycle events, security, transactions, etc.
Nestable	Build Java Controls using other built-in or custom Java Controls in infinite levels of nesting
Optimized for component re-use	Package Java Controls as re-distributable JAR files so they can be easily leveraged by any developer in any application
Advanced authoring features	Authors may populate the Property Sheet via a declarative XML syntax and provide extensions and wizards to the Design View



## PLATFORM AND REQUIREMENTS

### PLATFORMS:

Windows 2000, Windows XP, Linux (Red Hat Advanced Server 2.1), Solaris 8.0 and 9.0 (run-time only), HP-UX 11.0 and 11i (run-time only)

### FOR MORE INFORMATION

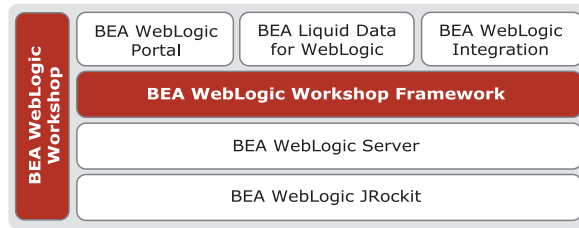
For more information about BEA WebLogic Workshop, please visit [www.bea.com/products/weblogic/workshop](http://www.bea.com/products/weblogic/workshop)

To download a free evaluation copy of BEA WebLogic Workshop go to: <http://commerce.bea.com>

### BEA SERVICES

While BEA WebLogic Workshop makes development easier, BEA Services provides resources to achieve even more value, more quickly. BEA Services, Consulting, and Support mitigate project and operational risks throughout the IT lifecycle with best practices, field-tested methodologies, and in-depth knowledge to accelerate the ROI on your development projects. Moreover, BEA Education Services provides all IT developers with the most comprehensive coverage of how to build scalable J2EE Web applications.

**BEA SYSTEMS, INC.**  
2315 North First Street  
San Jose, CA 95131  
1-800-817-4232  
1-408-570-8000  
[www.bea.com](http://www.bea.com)



## BEA WEBLOGIC ENTERPRISE PLATFORM

### BEA DEV2DEV SUBSCRIPTIONS – DEVELOPMENT SUCCESS DELIVERED STRAIGHT TO YOUR DOOR

Start developing today with BEA dev2dev Subscriptions – Trial Edition, granting a 12 Month fully functional development license to the entire BEA WebLogic Enterprise Platform. BEA dev2dev Subscriptions increase developer productivity by delivering the most up-to-date set of resources and technologies for developing on the BEA WebLogic Enterprise Platform—directly into the hands of developers via regular CD shipments and Web updates.

### ABOUT BEA

BEA Systems, Inc. (Nasdaq: BEAS) is the world's leading application infrastructure software company, providing the enterprise software foundation for more than 15,000 customers around the world, including the majority of the Fortune Global 500. BEA and its WebLogic® brand are among the most trusted names in business. Headquartered in San Jose, Calif., BEA has 77 offices in 31 countries and is on the Web at [www.bea.com](http://www.bea.com).

