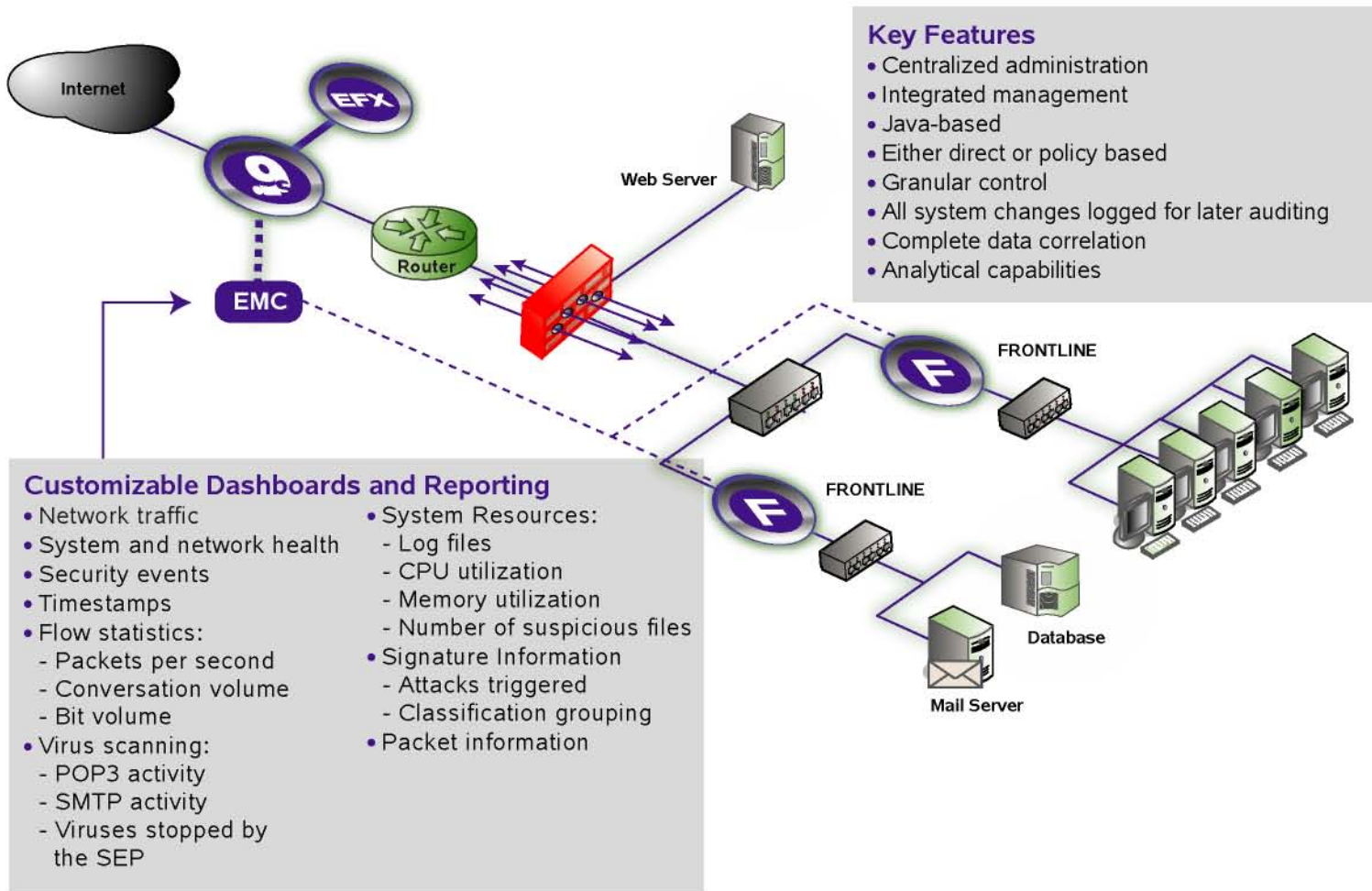


EdgeManagement Console™ (EMC) Datasheet



The EdgeManagement Console™ (EMC) is an integrated configuration and management device. The EMC is part of DeepNines Integrated Security Architecture™ (ISA), which also includes the Security Edge Platform™ (SEP), a converged security appliance with router security and EdgeForensiX™ (EFX), an advanced forensics appliance that captures every packet entering and exiting the network.

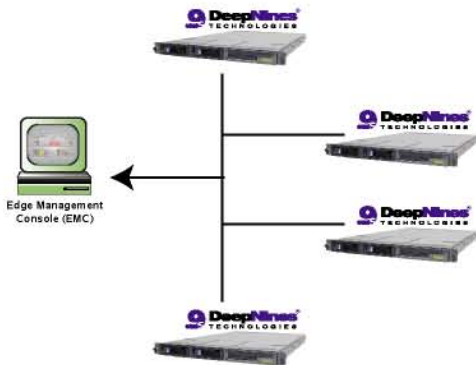
The EMC controls both the SEP and EFX and is used to configure, manage and generate reports from both appliances. It simplifies administration by providing complete management of all network traffic from a single location as opposed to gathering logs from several different devices throughout the network.



The EMC has robust reporting capabilities. Graphical dashboards and reports can be created and customized based on user preferences and requirements. These dashboards and reports can then be viewed on the EMC or exported to a variety of different formats. Reporting options include technical reports with detailed packet information, standard reports based on the short-term data collection of alarms, errors, device status and network health and high-level reports for executive reporting.

In a one-to-many configuration, one EMC can monitor up to thirty-two appliances or in a many-to-one configuration, an unlimited number of EMCs can monitor one appliance.

One to Many Relationship



Many to One Relationship



Dynamic Updates

Through the EMC's centralized configuration, the SEP and EFX receive dynamic updates. This includes signature updates, software upgrades and other system upgrades necessary to stay on top of the latest security trends and threats.

Ease of Management

The EMC is a Java-based GUI console that can run in any network environment. It manages the SEP and EFX from a single location at the network edge, which allows for complete visibility of network activity and traffic.

Centralized Configuration

Both the SEP and EFX can be easily configured to meet specifications defined by the administrator from the EMC. Configuration changes and modifications to both devices can also be made quickly and easily.

Real-Time Information

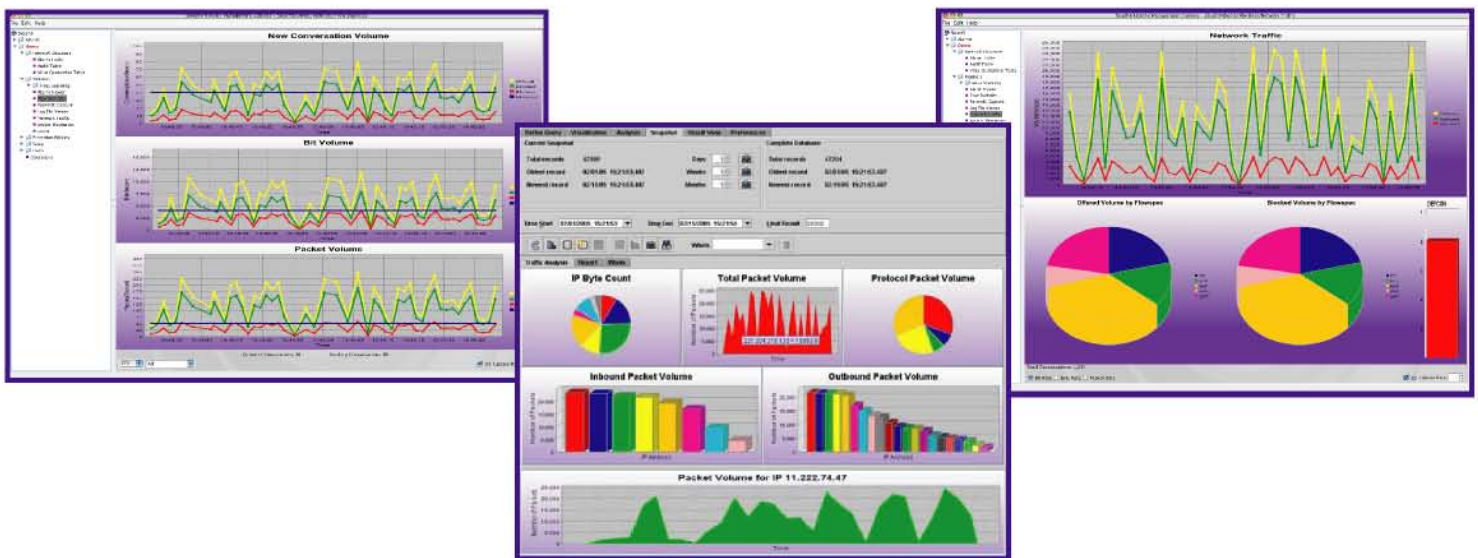
The EMC communicates with and controls the SEP and EFX in real-time, allowing users to view up-to-date security, network and performance metrics.

Unmatched Granular Control

The EMC is capable of controlling multiple parameters down to the individual host. This allows for unmatched granular control, monitoring and advanced reporting of network traffic.

Complete Security

The EMC is accessed out-of-band and utilizes SSL encryption to ensure complete privacy and security of all sensitive network data and reports.



www.deepnines.com
14643 Dallas Parkway Suite 150, LB 76
Dallas, Texas 75254