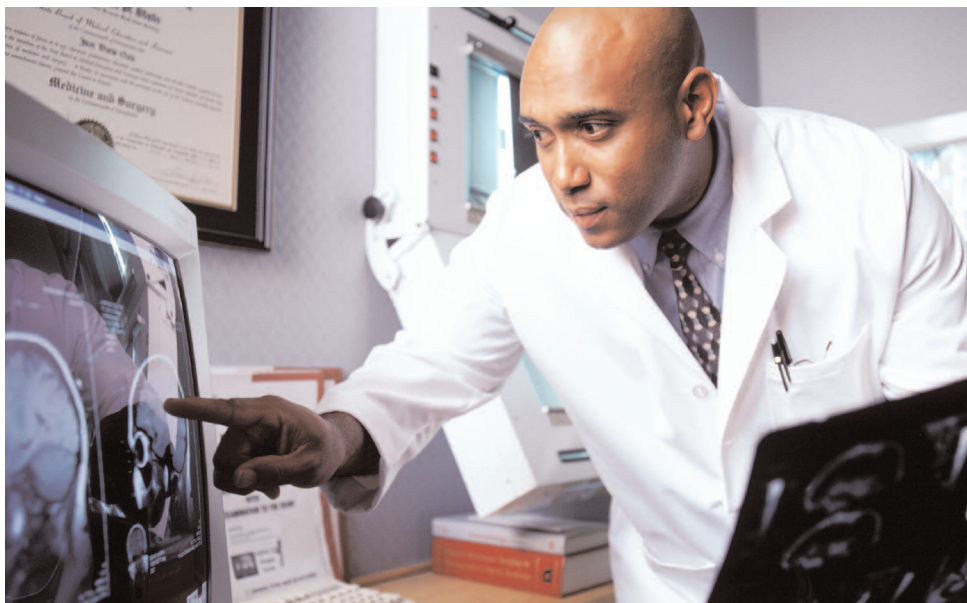


Sun and Teramedica

An Industry-Leading Partnership



Highlights

- Single-source EHR solution for enterprise-wide view of critical clinical and patient data
- Presents clinical and administrative information centrally and seamlessly
- Real-time information access at point of care including lab results, radiology images, pharmacy, and more
- Reduces manual processes, eliminates chart pulls
- Improves patient care and safety with single view of patient medical history
- Creates new processes and work flows to meet evolving business requirements
- Tracks access and secures patient information for health care provider HIPAA compliance



Partnering for patient safety

Sun and Teramedica formed a strategic partnership to deliver an industry-leading Electronic Health Record (EHR) solution to their health care providers. Built with the Sun Java™ Composite Application Platform Suite (CAPS) — the leading integration and composite application development platform and a component of Sun's Java Enterprise System offering — to support secure patient information sharing at the point of care, Sun now offers a single-source, image-enabled EHR.

Java CAPS enables health care providers to intelligently cross-match patient data from disparate points of care into a single patient record that is accessible to all organizations, to create EHR composite applications within a Service Oriented Architecture (SOA). These composite applications are made up of components from existing applications and new business logic. They are developed using the latest Web services standards and technologies for greater enterprise agility and reduced total cost of ownership.

The Electronic Health Record

The Sun EHR provides better clinician access to required medical data, resulting in fewer medical errors and more timely patient care. For patients, aggregated and centralized

medical data results in coordinated care across the continuum. This in turn means fewer duplicate tests and procedures, erroneous diagnoses, and delays in care delivery. Paper files and X-rays are not lost, chart pulls and subsequent administrative fees are minimized, while adverse drug and allergy interactions are avoided. The Sun EHR helps health care customers provide summary details on patient demographic and insurance information, data, and appropriate security following federal mandates.

The economics of the Sun Electronic Health Record provide better productivity — clinician and staff time is optimized, system resources and processes are streamlined, and communication is maximized through better technology.

Further, the Sun EHR is standards-based, providing organizations the flexibility and scalability to deliver care across regional or extended networks. This unique composite application emphasizes clinical best practices with unified viewing of clinical information from a myriad of systems to reduce medical errors.

The image-enabled EHR

With the explosive growth in radiology, cardiology, oncology, and pathology, combined with an aging population and more imaging studies per patient, providers need rapid access to clinical information at the point of care, including image-enabled EHRs. The Sun and Teramedica solution enables health care providers steeped in antiquated legacy foundation systems and redundant operations costs to eliminate the migration headaches that accompany “rip and replace” solutions. Now, providers can capitalize on information previously held captive in their existing systems while enabling the creation of new business processes and workflows based upon a real-time, relevant single view of patient information.

The Sun Electronic Health Record, with additional functionality provided by Teramedica, is highly scalable. With impressive results including 25,000 to 10 million studies annually, image sets up 100,000 images, horizontal/vertical scalability and petabytes of storage, it is designed to grow with an organization. Highly configurable, it is also adaptable to your organizational structure, allowing unique rules by business unit so the solution can fit.

The Sun and Teramedica offering is also “intelligence-enabled,” employing clinical rules to accelerate physician acceptance. Sun adheres to health care industry standards to facilitate information sharing and portability. With its Java 2 Platform, Enterprise Edition (J2EE™) platform flexibility, the Sun EHR is easy to maintain and supported on a variety of operating systems.

Developed for health care

Sun and Teramedica understand health care. Because the proliferation of paper-based medical records can be detrimental to patient care, providers need access to medical records that are consolidated and complete. That’s why we are working together to help health care providers deliver patient-centric health records that include true enterprise image viewing.

Benefits of the Sun EHR

The Sun EHR offers a total health record integration solution, including creating a single source for medical history, lab results, patient medical images, physician messaging, business services, and more.

With Teramedica, Sun now offers an image-enabled EHR for single point of access for virtually all information across departments, regions, or even nations.

The Sun EHR return on investment can be evaluated by a number of measurements, including:

1. *Patient safety focus* — Through improved clinical workflows, available decision criteria, and enhanced data management.

Learn More

Get the inside story on the trends and technologies shaping the future of computing by signing up for the Sun Inner Circle program. You’ll receive a monthly newsletter packed with information, plus access to a wealth of resources. Register today at sun.com/joinic.

2. *Speed* — The Sun EHR can be quickly operational, because existing systems are not replaced but instead reused.
3. *IT continuity in clinical processes* — The Sun EHR easy-to-use interface is designed for the clinical user and requires minimal training.
4. *Cost savings* — By extending the life of existing systems.
5. *Clinical user satisfaction* — Providing research information, e-mail, calendars, and other relevant data for clinician convenience.

About Sun

Sun provides a complete portfolio of affordable, interoperable, and open software systems designed to help you maximize the utilization and efficiency of your IT infrastructure. Built from the secure, highly available foundations of UNIX® and Java, these systems deliver implementations that are preintegrated and backward compatible. Sun’s portfolio consists of Solaris™ and Linux software for SPARC® and x86 platforms, Sun N1™ software, and the Sun Java System.