

SOLARIS™ PC NETLINK

THE SOLARIS™ OPERATING ENVIRONMENT

The Solaris™ Operating Environment is the established OS leader for availability, scalability, and security in the Internet age. In Solaris software, Sun delivers a trustworthy, universal platform to meet the needs of .com businesses — from small startups to large Fortune 1000 enterprises.

It's no surprise that the Solaris Operating Environment is the leading UNIX® environment today. Solaris software was originally designed with the Internet in mind. TCP/IP, the central Internet protocol, has been at the core of Solaris networking for more than 15 years. Through its time-tested design — a small, stable kernel, modular and extensible components, and well-defined interfaces — Solaris software delivers rock-solid stability and predictability for business-critical applications. And the Solaris Operating Environment provides complete compatibility with prior versions, so you can be confident that your current applications will continue to run.

SOLARIS™ PC NETLINK

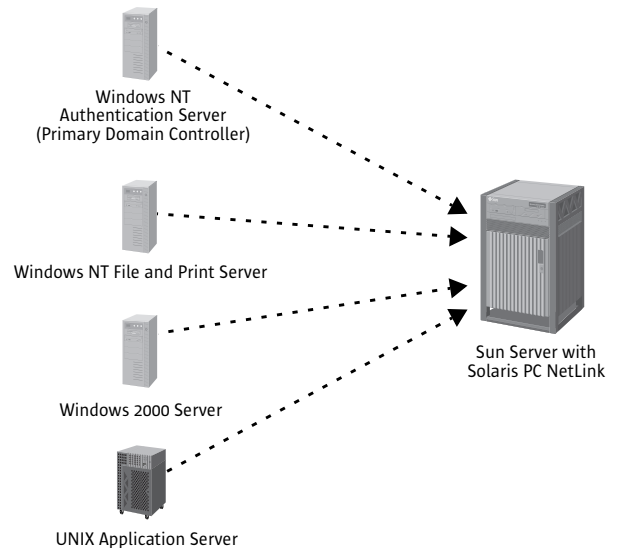
Agile businesses today are working to add new capabilities to their networks while at the same time controlling costs, maximizing uptime, and maintaining flexibility for future growth. Solaris™ PC NetLink software makes it all possible. Solaris PC NetLink delivers Windows NT 4.0 network services on top of the proven, industry-leading Solaris Operating Environment, providing naming, authentication, file, and print services to PCs. Transparent to both users and system administrators, Solaris PC NetLink enables you to consolidate multiple Windows NT systems and services onto fewer, more reliable Sun servers. The results? Less complexity, higher availability, lower cost of ownership — and the peace of mind that comes from a reliable, scalable Solaris solution.

- Enables Sun Enterprise™ servers and the Solaris Operating Environment to run in Windows NT domains, coexisting with or replacing Windows NT servers
- Compatible with networked Windows 2000 servers – Sun servers running PC Netlink are recognized by the network as Windows NT 4.0 Servers
- Allows Sun servers to provide transparent Windows NT file, print, directory, and security services to Windows 3.11, Windows 95, Windows 98, Windows NT, and Windows 2000 clients
- Uses native Windows NT tools to manage key server and network functions, eliminating learning curve for administrators trained in Windows NT
- Lowers total cost of ownership by reducing network complexity, easing system administration, and maximizing uptime
- Change is transparent to the client and requires no additional client software
- Runs on industry's most scalable server line (up to 64 CPUs), providing the flexibility to grow without adding systems

Based on AT&T's Advanced Server for UNIX, Solaris PC NetLink allows Sun servers to integrate with Microsoft Windows systems by implementing Windows NT services within the robust and proven Sun environment. This enables companies to consolidate services and applications onto an open, scalable, highly reliable platform combining .com agility with data center-class predictability.

EASY INSTALLATION AND ADMINISTRATION

- Simple installation
- Uses Windows NT server management tools, including:
 - User Manager
 - Server Manager
 - Event Viewer
 - Registry Editor



SOLARIS PC NETLINK AND AVAILABILITY BENEFITS

- Increases reliability of Windows NT environments
- Improves key network services familiar to Windows NT administrators
- Completely transparent to users
- Reduces complexity and lowers total cost of ownership
- Increases throughput and headroom to accommodate peak demand and growth
- Supports scalable systems running the robust Solaris Operating Environment
- Consolidates multiple applications onto one reliable server
- Simple, familiar installation and administration tools

SOLARIS™ EASY ACCESS SERVER

Solaris™ Easy Access Server 3.0 combines a complete set of Windows NT network services, familiar administration tools and global enterprise security services into a comprehensive, cross-platform solution for network computing. Solaris Easy Access Server makes it easy to set up and run Solaris systems in Windows NT networks, increasing the reliability of this legacy infrastructure while providing businesses with the ability to advance into the network age.

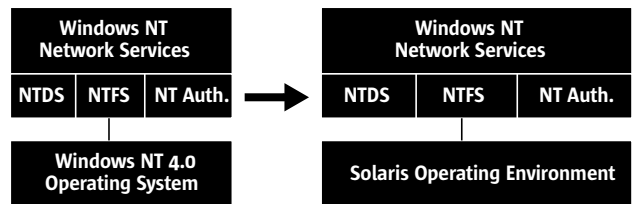
REQUIREMENTS

PLATFORM

- Solaris 7 or 2.6 Operating Environment on SPARC™ platforms; Solaris 7 Operating Environment on Intel platforms

	Windows NT 4.0	Solaris PC NetLink
Directory (PDC/BDC)	✓	✓
Security (ACLs/SAM/SID)	✓	✓
File and Print	✓	✓
NETBIOS/WINS	✓	✓
PC Administration Tools	✓	✓
Windows Client Support	✓	✓
Scalability	1-8 CPU systems	1-64 CPUs
Availability		✓

Windows NT Network Services on the Solaris Operating Environment



Solaris PC NetLink on a Sun Server

- Solaris Easy Access Server 3.0
 - 600 Mbytes to 1 Gbyte of server disk space
 - 32 Mbytes of memory minimum; 64 Mbytes of memory recommended (memory requirements can vary depending upon the number of clients and users)

CLIENTS

- Windows 3.11, Windows 95, Windows 98, Windows NT 4.0, and Windows 2000

DISK SIZE

- 100 Mbytes

MEMORY

- 128 Mbytes (64 Mbytes for Solaris PC NetLink)

COMPLIANCE

- Windows NT 4.0
- Year 2000

FOR MORE INFORMATION

To learn more about Solaris PC NetLink and the Solaris Operating Environment, please visit our Web site at www.sun.com/solaris/.