

SOLARIS™ WEB START

INSTALLATION AND DEPLOYMENT TECHNOLOGIES

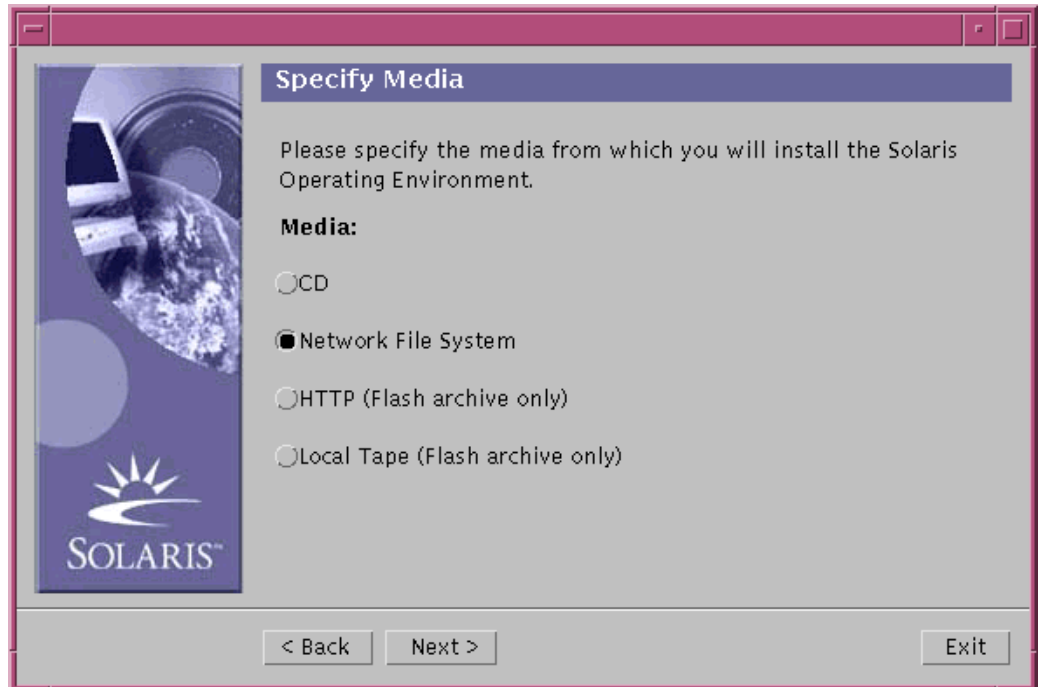
THE SOLARIS™ OPERATING ENVIRONMENT

Today's explosive levels of growth — in terms of bandwidth, networks, and digital devices — have created the phenomenon known as the Net Effect. It's forcing organizations to rethink how they create, manage, extend, and ultimately deliver information technology (IT) services. Yet at the same time, it's creating massive opportunities for innovation in regards to service and functionality.

For more than 15 years, Sun has been telling the world that The Network Is The Computer™, and has led the way in helping our customers harness the transforming power of the Net Effect. As the foundation for Sun™ systems, the Solaris™ 8 Operating Environment enables your IT organization to deliver on the promise of massive scale, continuous real-time computing, and secure systems — while increasing service levels, reducing risk, and decreasing costs. With Solaris 8 software, you can efficiently manage resources and provide a higher level of service. It also helps reduce complexity by providing easy-to-use interfaces and comprehensive administration tools — all designed to help lower your IT risk. And by optimizing your resources and enabling them to scale to meet demand, the Solaris 8 Operating Environment helps you to minimize costs and lower your total cost of ownership.

Overview

The Solaris Web Start product line encompasses several easy-to-use interactive and automated installation and deployment technologies that serve different customer needs. With Solaris Web Start software and the Solaris Web Start Wizards™ Technology, the Solaris Operating Environment and other applications can be installed interactively with a browser-based interface. Solaris JumpStart™ software enables you to automatically install or upgrade a large number of servers over the network. Complete system



- Solaris Web Start makes installing the Solaris 8 Operating Environment as simple as browsing the Web.
- Solaris Web Start Wizards software extends the ease of use of Solaris Web Start, simplifying the installation setup and administration of Solaris and Java™ applications.
- Web Start Flash technology enables administrators to take a complete system image of the Solaris Operating Environment, application stack, and system configuration and replicate that reference server configuration image onto multiple servers using standard deployment media or over the network via HTTP and NFS.
- Solaris JumpStart technology provides automated installation and setup of Solaris systems.
- Solaris Live Upgrade technology reduces the usual service outage typically associated with an operating system upgrade.

images can be replicated and deployed rapidly using the Web Start Flash feature. And with Solaris Live Upgrade technology, you can upgrade running systems, thereby reducing system downtime.

WEB START FLASH

COMPLETE SYSTEMS REPLICATION

As the latest edition to the Web Start product line, the Web Start Flash feature provides new installation and provisioning functionality. System administrators can capture a snapshot image of a complete server — including the Solaris Operating Environment, the applications stack, and the system configuration — into a new Flash Archive format. Using this system image, administrators can then replicate reference server configurations onto multiple (clone) servers. Web Start Flash images can be deployed via standard media or over the network via HTTP and NFS. Web Start Flash images can be installed using custom Solaris JumpStart scripts, the Solaris Web Start graphical interface, or Solaris interactive installation.

RAPID DEPLOYMENT

With Web Start Flash technology, installation time can be cut significantly. Internal tests conducted at Sun have shown that a complete Web server can be set up using the network install feature of Web Start Flash in under three minutes. This installation technology reduces configuration complexity, improves deployment scalability, and significantly saves time and administrative resources for server deployment.

LAYERED FLASH DEPLOYMENT

Web Start Flash technology provides the ability to layer Flash Archives. You can create partial Flash Archives to install in a

variety of ways. This feature increases the flexibility for rapid modular deployment.

For example, you can create one archive that contains the Solaris Operating Environment files, a second archive that contains the files necessary to run a Web server, and a third archive that contains the files for an NFS server. You can then install the first and second archives to one machine to create a Web server, and the first and third archives to create an NFS server.

By using layered archives, you can increase the flexibility of the Web Start Flash installation while you reduce the disk space required to store Flash Archives. When you install layered archives to a clone machine, one of the archives must contain the Solaris Operating Environment.

SERVER REPROVISIONING AND RETASKING

Enterprise customers can easily reconfigure a Cache server to a Web server to re provision their services by redeploying, thereby increasing service levels. This can be accomplished, for example, by deploying a Flash Archive containing the Solaris Operating Environment and files to run a Web server.

FRU SERVER SNAPSHOT

Web Start Flash technology can also be used to store existing server configurations, thus making them a field replaceable unit (FRU), where reinstallation can be done in a few minutes in the event of a complete system failure. Web Start Flash is ideal for the replication and deployment of server farms, a feature specifically designed for service providers and others who require rapid deployment and the ability to re provision servers on demand.

Web Start Flash technology is included in the Solaris 8 4/01 release.

SOLARIS WEB START

EASY-TO-USE GRAPHICAL INSTALLATION

Solaris Web Start software offers the industry's first and only Web-based installation process. It makes installing Solaris software as easy as browsing the Web. And, with this latest version for Sun's Solaris 8 Operating Environment, that's exactly what you can do — all while setting up your new Solaris 8 system.

Solaris Web Start software simplifies installation by eliminating the UNIX® system administration normally associated with software installation and setup. It enables the Solaris platform and copackaged software to be installed by less-experienced system administrators or administrators familiar with Microsoft Windows installations — safely and easily. Whether installing Solaris and copackaged software for the first time or upgrading from a previous version of the Solaris Operating Environment, you can take advantage of the latest version of Solaris Web Start software.

For the Solaris 8 platform, Solaris Web Start software delivers a completely immersed Webtop experience. During installation, the entire Solaris desktop is driven by a set of integrated Web pages. You can access a wide variety of Solaris documents through this revolutionary interface. If your system is connected to the Web, you can browse the Web prior to and during the software installation. The Web-based environment makes it easy to link to documentation, licensing, and registration information, as well as to the application developer's site for the latest updates.

After the installation, you can choose to continue with the Webtop experience by reloading the Webtop into the Common Desktop Environment (CDE) background using the Netscape™ browser. This user interface can be easily customized by anyone familiar with HTML and Web programming.

Installing or upgrading Solaris systems is done through a series of wizards that enable simple and easy Solaris software configuration. When finished, you are prompted to insert the appropriate CDs to complete the installation and setup process. With Solaris Web Start software, installing the Solaris Operating Environment is a quick and easy process.

SOLARIS WEB START WIZARDS

GUI INSTALLATION FOR ADD-ON SOFTWARE

Solaris Web Start Wizards technology brings ease of use to Solaris applications. Built into new applications, wizards simplify the installation, setup, and administration of applications written for both Solaris and Java environments. Extensive software administration tools come with Solaris software, and include support for inventory management, seamless upgrades, and a safe and reliable uninstall. These tools are all designed to simplify the administration of the Solaris environment.

Solaris Web Start Wizards technology is supported by InstallShield, the industry's leading install tools vendor. Developers can create simple installation and setup wizards for applications written for Solaris, Microsoft Windows, and Java environments using the same development tools. The easy-to-use Java interface works with any platform and can be run on any system securely and easily.

SOLARIS JUMPSTART SOFTWARE

AUTOMATED INSTALLATION

Solaris JumpStart software is an automated system that can install and set up a Solaris system anywhere on your network without any user interaction. Enterprise customers wishing to install or upgrade their Solaris systems on a larger scale or in a replicated fashion can take advantage of Solaris JumpStart capabilities. With Solaris JumpStart software, the Solaris Operating Environment and application software can be placed on centralized install servers, and the install process can be customized by senior system administrators. This capability reduces administrative costs by enabling less-experienced administrators — or even end users — to install the software they need.

Network administrators can take advantage of the Sun Enterprise™ Web Start Server to set up and customize Solaris JumpStart software for their networks. In the latest version, Solaris JumpStart has been enhanced to support installations in a DHCP environment.

SOLARIS LIVE UPGRADE

REDUCED SYSTEM DOWNTIME

The Solaris 8 Operating Environment includes the new Solaris Live Upgrade feature, which substantially reduces the usual service outage associated with an operating system upgrade. Solaris Live Upgrade technology can be used for patch testing and rollout. In addition, it makes it easy for administrators to fall back to a previous version of the system with a simple reboot, thereby eliminating the service outages associated with the normal test/evaluation process required when introducing a new version of an operating environment.

Solaris Live Upgrade technology enables Solaris 7 and 2.6 systems to continue to run normally while an administrator installs and configures Solaris 8 software on these systems. When satisfied, the administrator simply reboots the system to run the new operating environment. Solaris Live Upgrade also supports version migration and fallback. Administrators can save their previous environment and reload it with a simple reboot. Solaris Live Upgrade even supports synchronizing differences in the production and alternative boot environments.

SOLARIS WEB START COMPONENTS AND DOWNLOADS

- Web Start Flash, Solaris JumpStart, and Solaris Live Upgrade are included with the Solaris Operating Environment.
- Solaris Web Start Wizards SDK is available free to application developers at www.sun.com/solaris/webstart.

REQUIREMENTS

- Solaris 8, 7, or 2.6 Operating Environment on SPARC™ or Intel Architecture platforms

FOR MORE INFORMATION

To learn more about Solaris Web Start Flash, Solaris Web Start, Solaris Web Start Wizards, Solaris JumpStart, Solaris Live Upgrade, and the Solaris Operating Environment, please visit our Web site at www.sun.com/solaris.

