

Veritas Storage Foundation™ Manager by Symantec

Centralized management of heterogeneous applications, servers and storage



Storage Foundation Manager (SFM) enables server operations teams to manage Storage Foundation and related operations across all platforms from a centralized management framework, in providing information about an environment, which focuses on the administration of server and storage infrastructure resources from the application perspective. For example, in the case of a potential application outage, the system or storage administrator gets immediate help on which storage resources are affected from host to the array (end-to-end). As such it helps to improve productivity of server teams and availability of application and storage.

Reporting

Veritas Storage Foundation Manager allows organizations to centrally manage application, server, and storage environments from a secure Web-based console. With a summary dashboard that displays the state of these resources, administrators are able to monitor the data center infrastructure and drill down to manage any risks or faults in the environment.

and the status of host bus adapters (HBAs), disks, disk groups, volumes, and enclosures. This visibility allows administrators to quickly identify the root cause of faults and repair them online, leading to faster application deployment times, higher service levels, and reduced risk of human error.

The concept of an application group helps to understand which storage infrastructure resources are needed to run an application stack. Equally, the reports on storage and file system utilization are delivering an overview of how much storage is used per application group or across the organization.

The dashboard provides information quickly by collecting data from hundreds of Veritas Storage Foundation hosts and giving a detailed view of the underlying infrastructure. This includes the number and status of application groups and databases, operating system details,



Highlights

Storage Foundation Manager (SFM) offers 3 key benefits that are designed to improve productivity of server teams and availability of application & storage:

- **Reporting**—Gather data in seconds that would otherwise take hours, days or weeks thereby improving productivity and application & storage availability. Examples of reports include: which hosts have a single path, which licenses are deployed and how much storage is consumed
- **Automation**—Features such as DMP State Migration and Volume Migration allow for quicker and more accurate execution of day-to-day tasks
- **Risk Mitigation**—Figure out which servers have risks to availability, performance and act on those servers before they have an impact on business. Point out best practice and opportunities to increase utilization of the existing environment

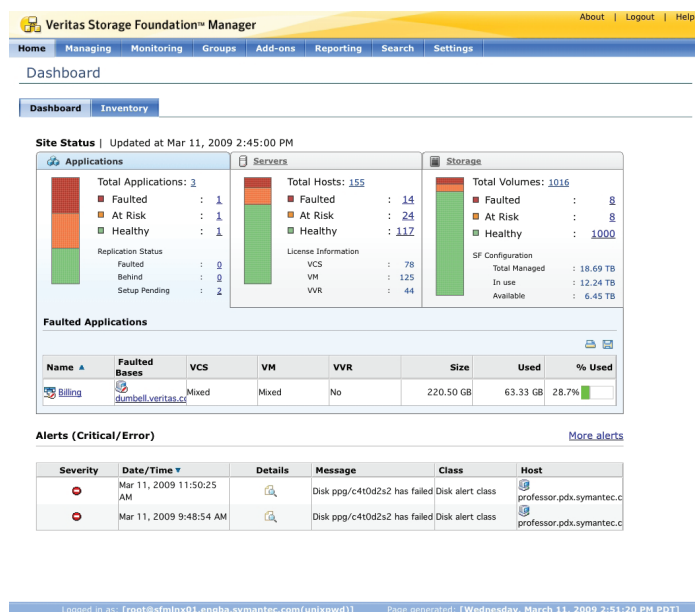


Figure 1. Veritas Storage Foundation Manager provides centralized visibility and management across diverse applications, servers, and storage.

Automation

Automation helps to assist operators leveraging Storage Foundation to handle key operations such as DMP path management and storage migration. Using a guided workflow, DMP management reduces the complexity of managing thousands of I/O paths in case they need to be temporarily disabled/enabled for array maintenance. The Volume Migration add-on simplifies complex migrations of data from one array to another. This add-on provides a simple graphical interface that allows volumes to be moved between homogeneous or heterogeneous storage arrays without taking applications offline. Migrations can be executed immediately or scheduled to occur at a later time.

Risk Mitigation

Health Check is designed to give administrators visibility into the health and configuration of the Storage Foundation deployments it manages. Through a series of checks, it periodically inspects hosts and reports back on the information it discovers at both high and detailed levels. Four categories of checks are available:

Availability checks ensure that the volume configuration is setup properly and redundantly. Performance Riskchecks monitor and report on the performance of Storage Foundation, e.g. I/O access times or waits. Storage Foundation Utilization are checks related to whether file systems or volumes are mounted or can instead be reclaimed for further use. Best practices provide a set of tips on how to more efficiently use Storage Foundation.

Advanced functionality enabled with add-ons

Add-ons enable new features to be deployed easily with a few simple commands. Available add-ons are: Storage Reclamation, SF Product Version Report, Storage Foundation Administration for Windows and Volume Migrator.

About Symantec

Symantec is a global leader in providing security, storage, and systems management solutions to help businesses and consumers secure and manage their information. Headquartered in Cupertino, Calif., Symantec has operations in more than 40 countries. More information is available at: www.symantec.com.

Symantec World Headquarters
20330 Stevens Creek Blvd.
Cupertino, CA 95014 USA
+1 (408) 517 8000
1 (800) 721 3934
www.symantec.com

More information

Visit Our Web Site
<http://enterprise.symantec.com>

Contact Us Today

Call toll-free 1 (800) 745 6054
To speak with a Product Specialist
outside the U.S.

For specific country offices and
contact numbers, please
visit our website.