



# Veritas NetBackup™ 6.5 Clients and Agents by Symantec

The Veritas NetBackup Platform —  
Next-Generation Data Protection



Veritas NetBackup provides a simple yet comprehensive selection of innovative clients and agents to optimize the performance and efficiency of your backup and recovery environment. These clients provide high-performance, online backup and recovery of business critical databases and applications, enable backup and recovery operations over storage networks, and deliver high levels of data security and complete system-level recovery. Organizations can centrally manage all aspects of backup and recovery operations from an intuitive graphical user interface (GUI), allowing consistent data protection policies to be established across the enterprise regardless of the type and number of clients deployed.

Depending on your needs, NetBackup has flexible client options to fit your environment and your budget.

## Standard Client

- NetBackup Client
- Bare Metal Restore
- Client Encryption

## Enterprise Client

- SAN Media Server
- SAN Client
- Snapshot Client
- VMware VCB
- Microsoft Hyper-V

## Application and Database Pack

- All databases
- All applications (excludes SAP)\*

\* The SAP agent is sold separately; it is not a part of the database pack.

*Figure 1. Veritas NetBackup can be deployed as a Standard Client or Enterprise Client. For critical applications and databases, Veritas NetBackup has a simplified/all-in-one database and application pack.*

### Standard Client

The NetBackup Standard Client contains key components such as the NetBackup Client, Bare Metal Restore, and Client Encryption.

- **NetBackup Client** — Resides on the same server as the application, database, or files that are being protected and sends data to a NetBackup server for protection or receives data during a recovery
- **Bare Metal Restore** — Provides all the files and services necessary to perform system recovery, including the ability to perform diskless network booting, temporary OS installation, and disk configuration. This feature boasts a complete system recovery time of approximately 15 minutes on any platform

- **Client Encryption** — Data is encrypted at the source/client to provide a very high level of data security while in transit over the network and on storage media. Client Encryption is ideal for protecting smaller, yet dedicated clients and databases. It supports a variety of encryption algorithms, including 128-bit and 256-bit and legacy 40-bit and 56-bit encryption methods

### Enterprise Client

The NetBackup Enterprise Client combines all of our advanced capabilities in one easy package. When you purchase the Enterprise Client, the Standard Client is included.

- **SAN Media Server** — Designed for customers who would prefer to utilize

their Storage Area Network (SAN) for backup operations instead of their Local Area Network (LAN). This feature enables LAN-free data protection with high-performance access to shared resources

- **SAN Client** — Offloads backup traffic from the LAN and allows for fast backups over the SAN at approximately 150MB/sec. The SAN Client can send data to a variety of NetBackup disk options and allows you to back up and restore to disk over the SAN. Data is sent to media servers via SCSI commands over the SAN rather than TCP/IP over the LAN to optimize performance
- **Snapshot Client** — Enables low-impact backup and recovery for databases and applications. By enabling you to leverage a variety of software or hardware snapshot capabilities, this feature can greatly reduce the amount of data being transferred during backup and recovery as well as dramatically improve backup performance and recovery time for mission-critical databases and applications
- **VMware Protection** — NetBackup provides both client level protection, as well as innovative, award winning NetBackup integration with VMware Consolidated Backup (VCB). This integration enables a single backup of VMware images to deliver granular file-level or full image-level recovery, reducing both the time and cost of VMware data protection. Other features include vSphere protection and recovery and the ability to automate and manage snapshots inside a virtual machine from host and array-based providers
- **Microsoft Hyper-V** — Simplify discovery and reduce the performance impact of virtual machine backup with fast and more granular recovery of files using the NetBackup catalog

## Database Protection

### IBM® DB2® UDB Universal Database

NetBackup software works with IBM DB2 native backup and recovery utilities to protect DB2 databases and archive logs. Backup and recovery operations may be performed either locally or remotely, and organizations can centrally manage all aspects of backup and recovery for database and nondatabase files from the intuitive NetBackup GUI. NetBackup

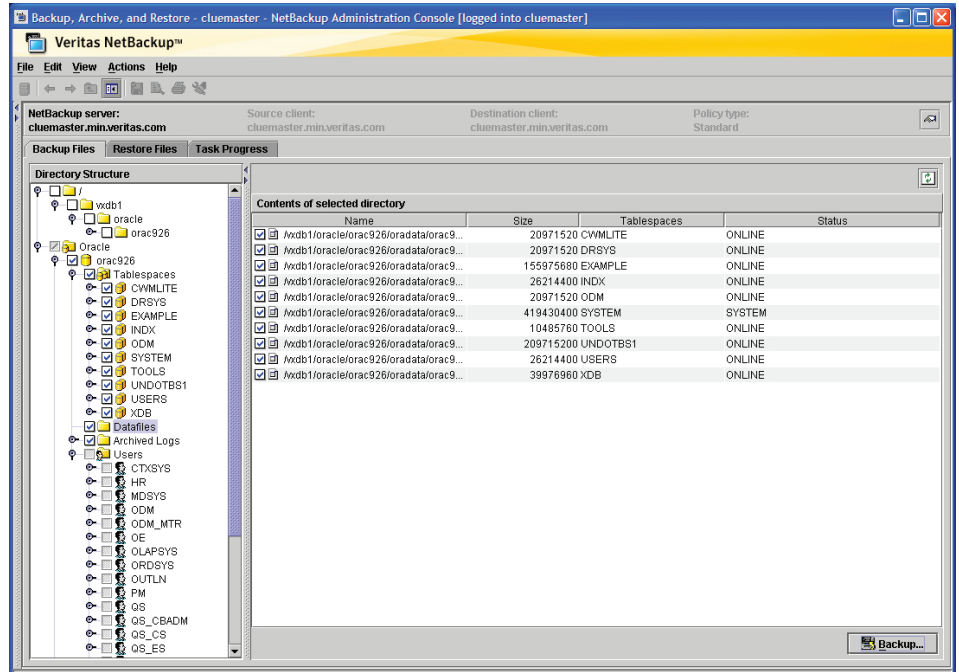


Figure 2. NetBackup Administration Console

offers unprecedented techniques for protecting DB2 databases—from integrated block-level backup and recovery to instant recovery via the NetBackup Snapshot Client.

## Product highlights

- **Flexible backup options** — Supports online full or incremental database backup and backup of archive logs via the user exit program
- **Scheduling facilities** — Leverages the NetBackup scheduler for automated, unattended DB2 backups
- **Wizard-based configuration** — Performs step-by-step configuration of DB2 backup and recovery via an intuitive, graphical, wizard-based interface

## IBM Informix Dynamic Server

NetBackup software provides complete data protection for IBM Informix Dynamic Server and IBM Informix Extended Parallel Server running on many of today's popular operating platforms. NetBackup, in conjunction with the Informix ON-Bar utility, provides a methodology to help ensure that business-critical Informix applications are safely backed up and can be recovered quickly.

## Product highlights

- **Continuous logical log backup** — Configure automated logical log backup to help prevent logical logs from filling up and locking up the database server
- **Parallel backup and restore** — Run more than one tape device at a time for a single Informix backup or restore, helping to reduce the time necessary to complete the operation

## Microsoft SQL Server

NetBackup for Microsoft SQL Server delivers comprehensive data protection for SQL Server and SQL Server databases. It provides the performance and flexibility required for effective backup and recovery operations within large SQL Server environments.

## Product highlights

- **High-speed recovery** — Verify-only restores can be used to verify the SQL contents of a backup image without actually restoring the data
- **Point-in-time recovery** — Recovers SQL databases to the exact point in time or transaction log mark by rolling forward only the transactions that occurred prior to a user-specified date and time

- **Granular database view** — Display of database object properties provides backup and recovery flexibility

### Oracle®

The NetBackup Oracle Agent is tightly integrated with the Oracle Recovery Manager (RMAN) to deliver a high performance backup and recovery solution. This online high-performance backup and recovery solution for Oracle environments also includes Oracle Real Application Clusters (RAC). The real value NetBackup brings to Oracle environments is its ability to integrate archiving capabilities as well as deliver advanced snapshot techniques enabled by the NetBackup Snapshot Client.

#### Product highlights

- **Online/hot Oracle backups** — Keep the database online and increase reliability by eliminating manual processes and scripts
- **RMAN Integration** — Tightly integrated with the Oracle Recovery Manager (RMAN) wizard to deliver high performance backup and recovery
- **Integrated with NetBackup** — Integrated with NetBackup for media management, snapshots, and continuous data protection with NetBackup RealTime

### Sybase®

NetBackup for Sybase offers high-performance backup and recovery for Sybase Adaptive Server Enterprise (ASE) databases on leading UNIX and Windows platforms.

#### Product highlights

- **Powerful scheduling** — Schedule automatic, unattended full or incremental backups
- **Parallel backup and recovery** — Supports the parallel backup and restore capabilities of the Sybase ASE Backup Server. This permits you to run more than one tape device at a time for a single Sybase ASE backup or restore, helping to reduce the time necessary to complete the operation

- **Track backup history** — Detailed views of backup history simplify restores, as backups of databases and transaction logs are easier to track

### Application Protection

#### IBM Lotus Notes and Lotus Domino server

Symantec offers high-performance backup and recovery for Lotus Notes and Lotus Domino server with NetBackup for Lotus Notes. Administrators can leverage intuitive GUIs to help set consistent backup policies across the enterprise and to quickly identify critical Lotus® files or databases when they need to be restored.

#### Product highlights

- **Backup method flexibility** — Support for scheduled, unattended backups; manual backups; and user backups, which allow end users to back up and restore pre-specified Lotus data
- **Alternate restoration techniques** — With backups not tied to a specific backup server, NetBackup software can restore Lotus data either on an alternate system or in an alternate directory
- **Advanced Lotus integration** — Support for partitioned Lotus servers and Lotus clustering

### Microsoft Active Directory

For any enterprise, Microsoft Active Directory is integral in managing network services. Therefore, the comprehensive protection and quick recovery of Active Directory is critical.

#### Product highlights

- **Recover any Active Directory item** — Granular recovery including the ability to recover all items with full attributes (e.g., user, server, printers) to satisfy both daily and disaster recovery (DR) requirements with one backup image
- **Eliminate Active Directory server re-boot** — Minimize downtime and keep the application up and running
- **Ease of use and control** — Leverage Microsoft VSS system state backup for ease of use and control

### Microsoft Exchange Server

Symantec recognizes the need for non-disruptive mechanisms to protect Exchange data, along with all data in the enterprise. NetBackup for Microsoft Exchange helps provide the performance and flexibility required for effective backup and recovery operations within large Exchange based environments.

#### Product highlights

- **Online backup** — Complete, nondisruptive protection of the Exchange database and mailbox components, including mailbox-level backup
- **Flexible restore options** — Rapid, granular recovery of databases and mailboxes, including support for performing individual message restores
- **Eliminate MAPI backups** — Enable granular recovery of the full application and a single email with only one backup pass and one copy stored

### Microsoft Office SharePoint Server

NetBackup for Microsoft Office SharePoint Server extends the capabilities of NetBackup to include online backups and restores of a Microsoft SharePoint environment (including earlier versions such as Microsoft SharePoint Portal Server).

#### Product highlights

- **Easy to use** — One console can be used to protect SharePoint and Windows services. Includes server farm configuration and single sign-on for databases
- **Automated backup** — Schedules can be set for automatic, unattended backups for local systems or for remote client systems over the network
- **Granular Recovery** — Save time and storage by recovering SharePoint files, including different versions of a file, sites, sub-sites, and lists such as calendars and links

Database or Application	NetBackup Agent Support <sup>1</sup>						
	HP-UX®	HP® Tru64	IBM AIX®	Linux	Microsoft Windows	SGI® IRIX	Sun™ Solaris™
IBM DB2	✓		✓	✓	✓		✓
IBM Informix	✓	✓	✓			✓	✓
IBM Lotus Notes			✓	✓	✓		✓
Microsoft Active Directory					✓		
Microsoft Exchange Server					✓		
Microsoft SharePoint Server					✓		
Microsoft SQL Server					✓		
Symantec Enterprise Vault					✓		
Oracle	✓	✓	✓	✓	✓	✓	✓
SAP	✓	✓	✓	✓	✓	✓	✓
Sybase	✓	✓	✓		✓	✓	✓

### Database and Application Support

#### SAP

The integration of NetBackup for SAP NetWeaver with the SAPDBA administrative interface, along with the BR backup and recovery commands, provides a solid, SAP NetWeaver-centric data protection solution for customer-specific configurations on the UNIX, Windows, and Linux® platforms.

#### Product highlights

- **Centralized backup operations** — Centralized management dramatically reduces the cost of backing up large SAP environments
- **Oracle RMAN support** — Leverage Oracle RMAN benefits when protecting SAP NetWeaver using Oracle
- **Flexible implementation** — Perform database operations through NetBackup, or use the SAP Tools (SAPDBA interface) independently of NetBackup

#### Symantec Enterprise Vault

NetBackup now automates the protection and recovery of Enterprise Vault environments.

#### Product highlights

- **Simplify protection of Enterprise Vault servers** — Automatically discover the various servers and components within your Enterprise Vault environment that need protection including partitions and their associated databases
- **Leverage snapshot technology** — The backup of the snapshot is done quickly and efficiently eliminating the need for manual scripts or the manipulation of registry settings
- **Effective disaster recovery** — Centrally manage the disaster recovery process of the Enterprise Vault partitions and databases

#### About Symantec

Symantec is a global leader in providing security, storage, and systems management solutions to help businesses and consumers secure and manage their information. Headquartered in Cupertino, Calif., Symantec has operations in more than 40 countries. More information is available at [www.symantec.com](http://www.symantec.com).

#### Visit our website

<http://sun.com/netbackup>

#### To speak with a

#### Product Specialist in the U.S.

Call toll-free 1 (800) 555-9SUN

#### To speak with a

#### Product Specialist outside the U.S.

For specific country offices and contact numbers, please visit our website.

<sup>1</sup> For the latest software and hardware compatibility information, please see the Compatibility Lists at <http://www.support.veritas.com> or contact your Sun sales representative.